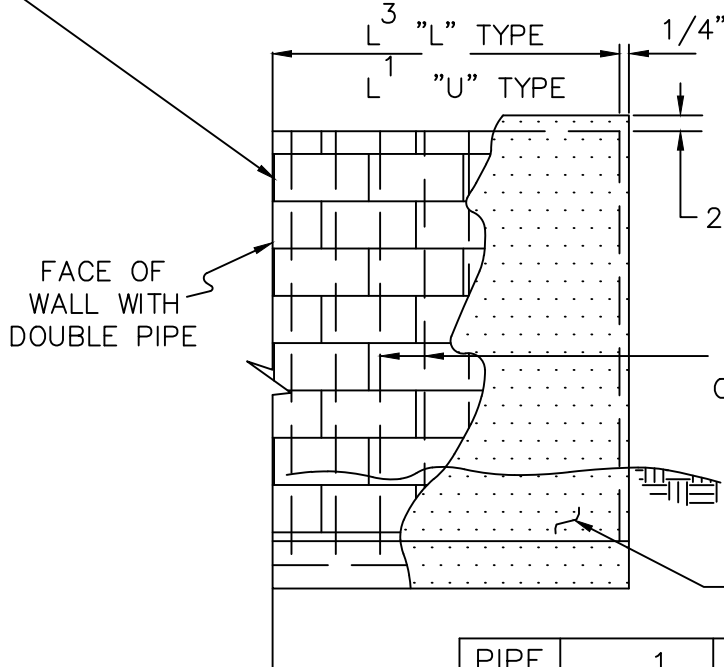


8" x 8" x 16"
MASONRY BLOCKS



CONC. PLASTERED WALLS
PLASTERED BOTH SIDES OF
WALL DOWN TO TOP OF FOOTING

2" ROUNDED CONC.
PLASTER CAP

No. 4 ϕ BAR IN EACH
CORE FILLED WITH CONCRETE
OR CEMENT GROUT (3:1 RATIO)

1/4" PLASTER

GENERAL NOTES:

1. REINFORCING BARS MIN. YIELD STRENGTH = 40,000 psi.
2. THE WALL SHALL HAVE HORIZONTAL JOINT REINFORCEMENT AT EVERY COURSE OR A HORIZONTAL BOND BEAM WITH TWO No. 4 BARS EVERY 16 INCHES.

PIPE DIA.	1 L	2 L	3 L	4 L	5 L
12"	1'- 4"	2'- 0"	3'- 8"	0'- 10"	2'- 10"
15"	2'- 0"	2'- 8"	4'- 0"	1'- 0"	3'- 0"
18"	2'- 0"	3'- 8"	4'- 8"	1'- 2"	3'- 4"
21"	2'- 8"	4'- 0"	5'- 4"	1'- 3"	3'- 8"
24"	2'- 8"	4'- 0"	5'- 4"	1'- 6"	3'- 11"
30"	2'- 8"	5'- 4"	6'- 8"	1'- 10"	4'- 7"
36"	3'- 4"	6'- 8"	8'- 0"	1'- 10"	5'- 2"
42"	4'- 0"	8'- 0"	9'- 4"	2'- 2"	5'- 9"



CITY OF CORDELE, GEORGIA - STANDARD DETAIL

DOUBLE PIPE HEADWALL

DETAIL NO:

D-010

DATE: