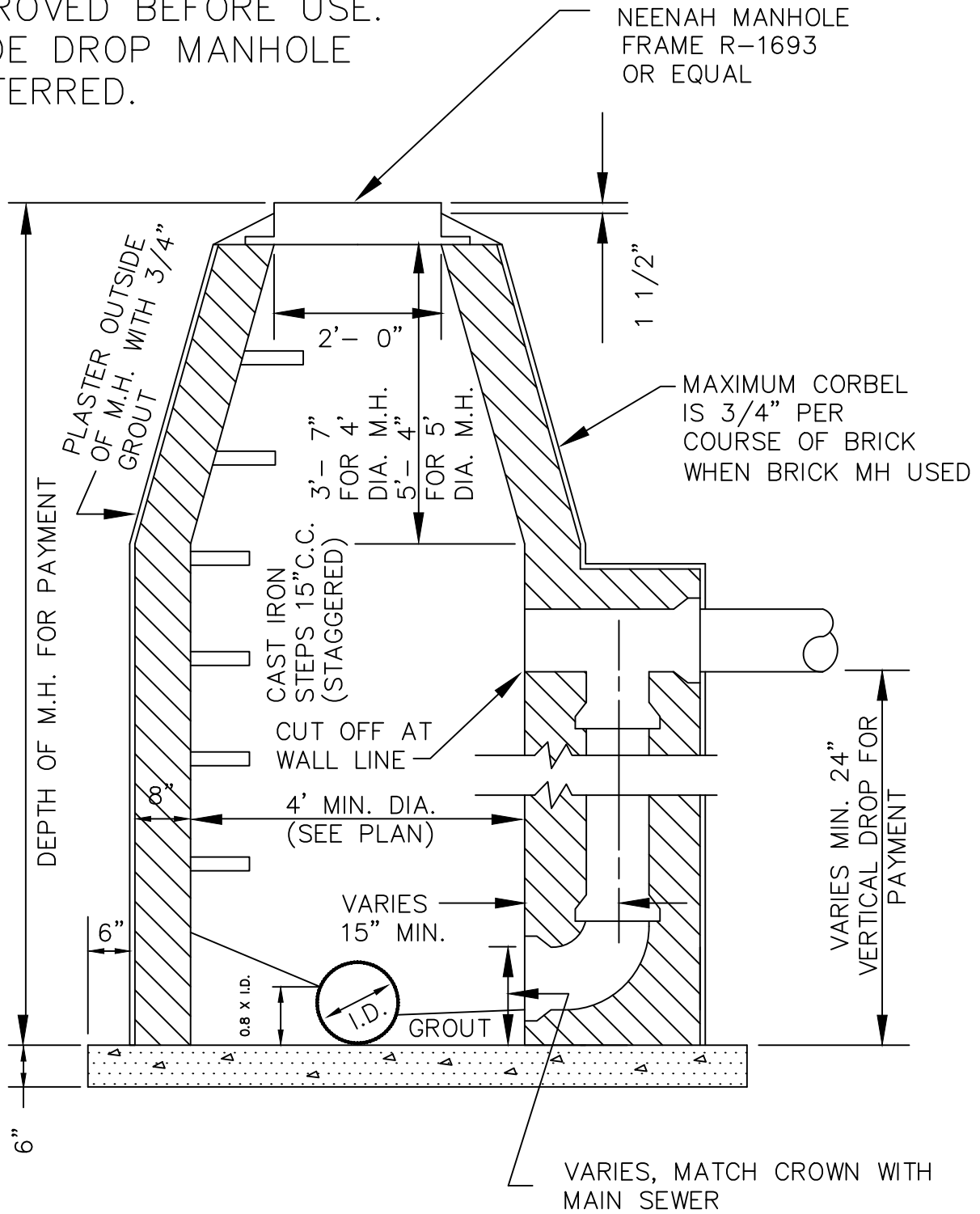


NOTE: OUTSIDE DROP
MANHOLE MUST BE
APPROVED BEFORE USE.
INSIDE DROP MANHOLE
PREFERRED.



NOTE:
WHERE TAPS ENTER MANHOLE, NEOPRENE BOOT OR
OTHER APPROVED SEALING METHOD REQUIRED.
NEOPRENE BOOT OR OTHER APPROVE SEALING
METHOD REQUIRED AT PIPE ENTRY.



CITY OF CORDELE, GEORGIA - STANDARD DETAIL

OUTSIDE DROP MANHOLE

DETAIL NO:

S-003A

DATE: OCT 2018