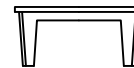
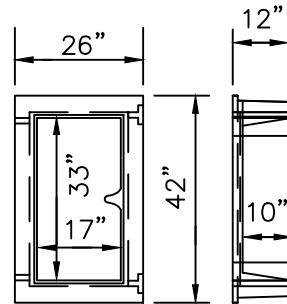
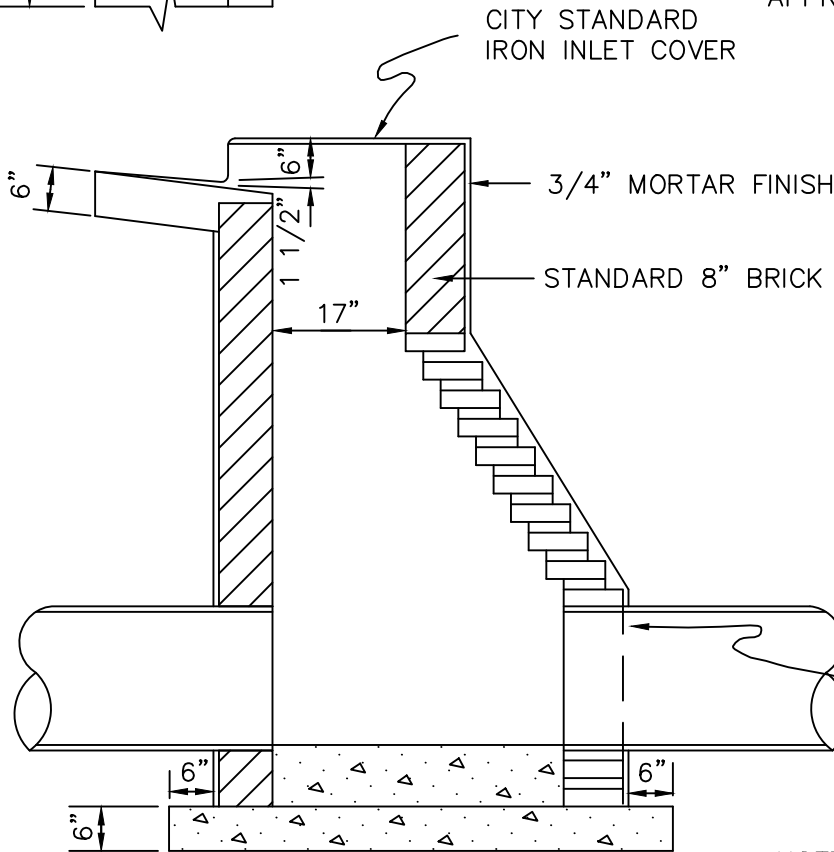


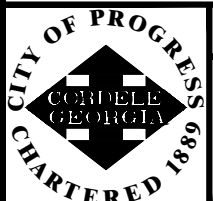
NOTE:
 1. CONSTRUCT INVERT TO CENTERLINE OF LARGEST PIPE UNLESS OTHERWISE APPROVED.
 2. STEPS ARE NEEDED WHEN INLET DEPTH EXCEEDS 4 FT.
 3. MOTOR GRADER BLADES NOT ACCEPTABLE UNLESS APPROVED BY CITY ENGINEER.



RECTANGULAR CATCH BASIN FRAME

MAXIMUM CORBEL IS 3/4" PER COURSE OF BRICK

NOTE:
 CONSTRUCT INVERT TO CENTER LINE OF LARGEST PIPE UNLESS OTHERWISE APPROVED.



CITY OF CORDELE, GEORGIA - STANDARD DETAIL

STORM INLET

DETAIL NO:

D-003L

DATE: OCT 2018